

FINANCIAL STATEMENT - 2015 Biennium
 Fiscal Year 2014: Percent of Year Elapsed: 17
 As of 9/5/13

OIL AND GAS DIVISION
 FY14 Budget vs. Expenditures

FTE Obj	2011			2012			2012			2013			2029			2030			2031			2014	2014	Expend % of Budget
	Regulatory Budget	Expend	% of Budget	Regulatory ProAdj (OTO)	Expend	% of Budget	UIC Budget 2012-13	Expend	% of Budget	UIC ProAdj (OTO)	Expend	% of Budget	EOR Study (OTO)	Expend	% of Budget	Compliance & Field Inspection	Expend	% of Budget	Procedures Manual	Expend	% of Budget	TOTAL BUDGET	TOTAL EXPENDS	
FTE	18.0						3.5									3.0						24.5		
1100 Salaries	874,856	109,434	0.17				179,898	18,861	0.14							107,356						1,162,110	129,385	0.15
1300 Other Comp	5,789	1,048	0.00	6,150			581	43		1,350												13,870		
1400 Benefits/Ins	301,122	34,466					57,164	6,251								44,123						402,409	40,717	
1600 Vacancy Savings	(67,270)						(18,453)									(6,060)						(91,783)		
2100 Contracted Svcs	219,530	14,962	0.07	15,580			22,185	2,675	0.12	23,420			178,976			22,759			120,000			602,450	17,637	0.03
2200 Supplies	57,121	6,144	0.11				13,951	897	0.06													71,072	7,042	0.10
2300 Communications	50,466	5,655	0.11				9,185	1,051	0.11													59,651	6,706	0.11
2400 Travel	38,624	2,881	0.07				7,195	326	0.05													45,819	3,206	0.07
2500 Rent	17,050	4,851	0.28	14,640			3,289	378	0.11	360												35,339	5,229	0.15
2600 Utilities	17,356	2,966	0.17				3,732	585	0.16													21,088	3,550	0.17
2700 Repair/Maint	14,822	2,438	0.16				3,583	536	0.15													18,405	2,973	0.16
2800 Other Expenses	25,442	957	0.04	990			20,472	10	0.00													46,904	967	0.02
3100 Equipment	36,656		0.00	3,000			16,073			3,000						28,000						86,729		
6000 Grants																								
Total	1,591,564	185,801	0.12	40,360			318,855	31,612	0.10	28,130			178,976			196,178			120,000			2,474,063	217,412	0.09
FUNDING																								
State Special Federal	1,591,564	185,801	0.12	40,360			211,772	31,611	0.15	28,130			178,976			196,178			120,000			2,366,980	217,412	0.09
							107,083															107,083		
Total Funds	1,591,564	185,801		40,360			318,855	31,611		28,130			178,976			196,178			120,000			2,474,063	217,412	

FTE : 2.5 reg; 0.5 UIC

checked balance

EXHIBIT 1

Contracted Svcs

Includes accruals
 Sage Grouse
 Field Insp. Manual
 SNaP
 Teachers 14 & 15

Other expenditures
 Teachers 13
 Elm Coulee FY13
 SNaP FY 13

2013 Biennium		
2027 Education Outreach	Expend*	Expend % of Budget
1,500,000	919,665	0.61
	37,500	
	28,779	
	338,638	
	96,000	

FY 12 Carryforward Org 2022	
start balan	161,076
exp	(8,681)
avail balan	152,395

REVENUE INTO STATE SPECIAL REVENUE ACCOUNT 9/5/13			
	FY 14	FY 13	Percentage FY14:FY13
Oil Production Tax	524,962	1,858,828	0.28
Gas Production Tax	39,513	151,953	0.26
Drilling Permit Fees	6,850	68,400	0.10
UIC Permit Fees		225,200	
Interest on Investments	257	6,239	0.04
Copies of Documents	436	6,754	0.06
Miscellaneous Reimbursemts		<u>14,395</u>	
TOTALS	\$ 572,019	\$ 2,331,769	0.25

REVENUE INTO DAMAGE MITIGATION ACCOUNT as of 9/5/13	
	FY14
Transfer in from Orphan Share	0
RIT Interest	0
Bond Forfeitures	0
Interest on Investments	<u>61</u>
TOTAL	\$ 61

REVENUE INTO GENERAL FUND FROM FINES as of 9/5/13		
		FY 14
Hoffland James D	7/5/2013	200
Hawley Oil LLP	7/15/2013	220
Denmark Resources Inc.	7/16/2013	70
Hawley Oil	7/16/2013	30
Montana Resources Mgmt	7/19/2013	60
Slohcin Inc.	7/31/2013	<u>60</u>
TOTAL		\$ 640.00

BOND FORFEITURES AS OF 9/5/13
Go into Damage Mitigation Account

None

Investment Account Balances - 10/8/13

Regulatory Account (02432)	3,483,121
Damage Mitigation Account (02010)	432,835

GRANT BALANCES - 10/2/13

Name	Authorized Amt*	Expended	Balance
2009 Northern RIT 10-8697	322,236	203,066	119,170
2009 Southern RIT 108698	315,219	170,632	144,587
2007 Tank Battery RIT 10-8711	304,847	304,847	0
2011Southern - TankBattery2 RIT 12-8723	204,951	100,710	104,241
2011 Northern/Eastern RIT 13-8753	332,642	0	332,642
2011 Eastern RIT 13-8752	318,498	0	318,498
* includes match requirement for grant			
TOTALS	\$1,798,393	\$779,255	\$1,019,138

incl match xpnd thru 8/13 expires 12/31/2013
 incl match xpend thru 8/13 expires 12/31/2013
 done
 inc. total match req Expires 12/31/2013
 expires 12/15/2015
 expires 12/15/2015

CONTRACT BALANCES - 10/2/13

HydroSolutions - EPA Primacy Class VI Injection	57,156	15,991	41,165
MT Tech - Procedures Manual/Field Inspection System	32,699	4,946	27,753
MT Tech - Survey of Native Proppant (SNaP)	383,101	65,343	317,758
MT Tech - Elm Coulee EOR Study	863,905	230,380	633,525
Automated Maintenance Services, Inc. FY14	21,848	0	21,848
Agency Legal Services - Legal	60,000	9,660	50,340
Central Avenue Mall FY 14	400	0	0
Liquid Gold Well Service, Inc. - 09 Northern	179,941	176,458	3,483
Liquid Gold Well Service, Inc. - 09 Southern	185,059	185,059	0
C-Brewer - 07 & 11 Southern Tank Battery	424,650	405,392	19,258
Liquid Gold Well Service - 11 Eastern	201,459	0	201,459
Liquid Gold Well Service - 11 Northern/Eastern	201,325	0	201,325
Frontier Fence Co - Billings Gate	12,500	0	12,500
MT Fish, Wildlife and Parks	37,500	0	37,500
Teachers Workshop 2014 and 2015	96,000	0	96,000
TOTALS	2,757,543	1,093,228	1,663,915

expires 5/31/2014
 expires 3/30/2014
 expires 9/30/2015 65544
 expires 12/31/2017
 expires 6/30/2014
 expires 6/30/2014
 expires 6/30/2014
 used 20,059 of this original contract authority for LGW 09 Southern expires 12/31/2013
 used 20,059 of LGW 09 Northern for this project expires 12/31/2013
 expires 12/31/2013
 expires 6/30/2014
 expires 6/30/2014
 expires 11/24/2013
 expires 1/31/2014
 expires 7/31/2015

Agency Legal Services Expenditures in FY14

Case	Amt Spent	Last Svc Date
BOGC Duties	9,660	8/13

FY 13 FY 12
 24,166 32,162

IMMEDIATE ATTENTION

FYI

MT Board of Oil + Gas Conservation Proposed Meeting Schedule

June

2014

KEY	
PAYDAYS	○
PAY PERIOD ENDING	□
HOLIDAYS	◇

JANUARY

S	M	T	W	TH	F	S
			◇ 1	2	3	4
5	6	7	○ 8	9	□ JAN 10	11
12	13	14	15	16	17	18
19	◇ 20	21	○ 22	□ JAN 23	□ JAN 24	25
26	27	28	29	30	31	

FEBRUARY

S	M	T	W	TH	F	S
						1
2	3	4	○ 5	6	□ FEB 7	8
9	10	11	12	13	14	15
16	◇ 17	18	○ 19	20	□ FEB 21	22
23	24	25	▨ 26 27		28	

MARCH

S	M	T	W	TH	F	S
						1
2	3	4	○ 5	6	□ MAR 7	8
9	10	11	12	13	14	15
16	17	18	○ 19	□ MAR 20	□ MAR 21	22
23 ₃₀		24 ₃₁		25	26	27 28 29

APRIL

S	M	T	W	TH	F	S
		1	○ 2	3	□ APR 4	5
6	7	8	9	10	11	12
13	14	15	○ 16	17	□ FREE 18	19
20	21	22	▨ 23 24		25	26
27	28	29	○ 30			

MAY

S	M	T	W	TH	F	S
				1	□ APRIL 2	3
4	5	6	7	□ 8	9	10
11	12	13	○ 14	15	□ MAY 16	17
18	19	20	21	22	23	24
25	◇ 26	27	○ 28	29	□ MAY 30	31

JUNE

S	M	T	W	TH	F	S
1	2	3	4	5	6	7
8	9	10	▨ 11 12		□ JUNE 13	14
15	16	17	18	19	20	21
22	23	24	○ 25	26	□ JUNE 27	28
29	30					

JULY

S	M	T	W	TH	F	S
		1	2	3	◇ 4	5
6	7	8	○ 9	□ JULY 10	□ JULY 11	12
13	14	15	16	17	18	19
20	21	22	○ 23	24	□ JULY 25	26
27	28	29	30	31		

AUGUST

S	M	T	W	TH	F	S
					1	2
3	4	5	○ 6	7	□ AUG 8	9
10	11	12	▨ 13 14		15	16
17	18	19	○ 20	21	□ AUG 22	23
24 ₃₁	25	26	27	28	29	30

SEPTEMBER

S	M	T	W	TH	F	S
	◇ 1	2	○ 3	4	□ SEP 5	6
7	8	9	10	□ SEP 11	12	13
14	15	16	○ 17	18	□ SEP 19	20
21	22	23	24	25	26	27
28	29	30				

OCTOBER

S	M	T	W	TH	F	S
		○ 1	2	□ OCT 3	4	
5	6	7	8	9	10	11
12	◇ 13	14	▨ 15 16		□ FREE 17	18
19	20	21	22	23	24	25
26	27	28	○ 29	30	□ OCT 31	

NOVEMBER

S	M	T	W	TH	F	S
						1
2	3	◇ 4	5	□ NOV 6	7	8
9	10	○ 11	12	13	□ NOV 14	15
16	17	18	19	20	21	22
23 ₃₀	24	25	○ 26	◇ 27	□ NOV 28	29

DECEMBER

S	M	T	W	TH	F	S
1	2	3	4	5	6	
7	8	9	▨ 10 11		□ DEC 12	13
14	15	16	17	18	19	20
21	22	23	○ 24	◇ 25	□ DEC 26	27
28	29	30	31			

▨ = meeting dates

□ = filing deadline

Bond Report
And
Docket Summary

Montana Board of Oil and Gas Conservation Summary of Bond Activity

8/5/2013 Through 10/8/2013

Approved

American Midwest Oil & Gas Corp. Billings MT	744 G1	Approved	8/14/2013
		Amount:	\$5,000.00
		Purpose:	Single Well Bond
Certificate of Deposit	\$5,000.00	Western Security Bank	
Glacier Production, Inc. Cut Bank MT	2975 G1	Approved	9/23/2013
		Amount:	\$5,000.00
		Purpose:	Single Well Bond
Certificate of Deposit	\$5,000.00	Bank of Glacier County	
North Range Exploration, LLC Lake Placid NY	725 G5	Approved	9/23/2013
		Amount:	\$10,000.00
		Purpose:	Single Well Bond
Certificate of Deposit	\$10,000.00	Stockman Bank of Montana	
North Range Exploration, LLC Lake Placid NY	725 G4	Approved	8/21/2013
		Amount:	\$1,500.00
		Purpose:	Single Well Bond
Certificate of Deposit	\$1,500.00	Stockman Bank of Montana	
P&P Industries LLC 1 Lambert MT	747 T1	Approved	9/6/2013
		Amount:	\$10,000.00
		Purpose:	UIC Single Well Bond
Certificate of Deposit	\$10,000.00	STOCKMAN BANK, SIDNEY	
Synergy Offshore LLC Houston TX	662 U1	Approved	9/16/2013
		Amount:	\$50,000.00
		Purpose:	UIC Limited Bond
Certificate of Deposit	\$50,000.00	FIRST STATE BANK OF SHELBY	
Weil Oil LLC Richmond VA	748 G1	Approved	9/16/2013
		Amount:	\$10,000.00
		Purpose:	Single Well Bond
Certificate of Deposit	\$10,000.00	FIRST STATE BANK OF SHELBY	
Wexco Exploration, LLC Dallas TX	746 G1	Approved	9/5/2013
		Amount:	\$10,000.00
		Purpose:	Single Well Bond
Certificate of Deposit	\$10,000.00	FIRST INTERSTATE BANK	

Released

Amoco Production Company Chicago IL	220 M1	Released	9/23/2013
		Amount:	\$25,000.00
		Purpose:	Multiple Well Bond
Surety Bond	\$25,000.00	SEABOARD SURETY CO.	
Amoco Production Company Chicago IL	220 U1	Released	9/24/2013
		Amount:	\$200,000.00
		Purpose:	UIC Limited Bond
Surety Bond	\$200,000.00	TRAVELERS CASUALTY & SURETY CO. OF AMERICA	

Montana Board of Oil and Gas Conservation Summary of Bond Activity

8/5/2013 Through 10/8/2013

Approved

American Midwest Oil & Gas Corp. Billings MT	744 G1	Approved	8/14/2013
		Amount:	\$5,000.00
		Purpose:	Single Well Bond
Certificate of Deposit	\$5,000.00	Western Security Bank	
Glacier Production, Inc. Cut Bank MT	2975 G1	Approved	9/23/2013
		Amount:	\$5,000.00
		Purpose:	Single Well Bond
Certificate of Deposit	\$5,000.00	Bank of Glacier County	
North Range Exploration, LLC Lake Placid NY	725 G5	Approved	9/23/2013
		Amount:	\$10,000.00
		Purpose:	Single Well Bond
Certificate of Deposit	\$10,000.00	Stockman Bank of Montana	
North Range Exploration, LLC Lake Placid NY	725 G4	Approved	8/21/2013
		Amount:	\$1,500.00
		Purpose:	Single Well Bond
Certificate of Deposit	\$1,500.00	Stockman Bank of Montana	
P&P Industries LLC 1 Lambert MT	747 T1	Approved	9/6/2013
		Amount:	\$10,000.00
		Purpose:	UIC Single Well Bond
Certificate of Deposit	\$10,000.00	STOCKMAN BANK, SIDNEY	
Synergy Offshore LLC Houston TX	662 U1	Approved	9/16/2013
		Amount:	\$50,000.00
		Purpose:	UIC Limited Bond
Certificate of Deposit	\$50,000.00	FIRST STATE BANK OF SHELBY	
Weil Oil LLC Richmond VA	748 G1	Approved	9/16/2013
		Amount:	\$10,000.00
		Purpose:	Single Well Bond
Certificate of Deposit	\$10,000.00	FIRST STATE BANK OF SHELBY	
Wexco Exploration, LLC Dallas TX	746 G1	Approved	9/5/2013
		Amount:	\$10,000.00
		Purpose:	Single Well Bond
Certificate of Deposit	\$10,000.00	FIRST INTERSTATE BANK	

Released

Amoco Production Company Chicago IL	220 M1	Released	9/23/2013
		Amount:	\$25,000.00
		Purpose:	Multiple Well Bond
Surety Bond	\$25,000.00	SEABOARD SURETY CO.	
Amoco Production Company Chicago IL	220 U1	Released	9/24/2013
		Amount:	\$200,000.00
		Purpose:	UIC Limited Bond
Surety Bond	\$200,000.00	TRAVELERS CASUALTY & SURETY CO. OF AMERICA	

Montana Board of Oil and Gas Conservation Summary of Bond Activity

8/5/2013 Through 10/8/2013

Released

BP America Production Company Houston TX	366 M1	Released Amount: Purpose:	9/23/2013 \$50,000.00 Multiple Well Bond
Surety Bond	\$50,000.00	TRAVELERS CASUALTY & SURETY CO, HARTFORD	
Chaparral Energy, LLC Oklahoma City OK	307 M1	Released Amount: Purpose:	8/9/2013 \$50,000.00 Multiple Well Bond
Surety Bond	\$50,000.00	U.S. Specialty Insurance Co.	
Energy Corporation of America Charleston WV	626 T2	Released Amount: Purpose:	8/16/2013 \$10,000.00 UIC Single Well Bond
Surety Bond	\$10,000.00	U.S. Specialty Insurance Co.	
Great Plains Operating, LLC Littleton CO	103 T3	Released Amount: Purpose:	8/13/2013 \$10,000.00 UIC Single Well Bond
Certificate of Deposit	\$10,000.00	FIRST SECURITY BANK OF ROUNDUP	
RC Energy Montana Ltd. Calgary AB	601 G1	Released Amount: Purpose:	8/14/2013 \$5,000.00 Single Well Bond
Certificate of Deposit	\$5,000.00	FIRST STATE BANK OF SHELBY	
RC Energy Montana Ltd. Calgary AB	601 G2	Released Amount: Purpose:	8/14/2013 \$5,000.00 Single Well Bond
Certificate of Deposit	\$5,000.00	FIRST STATE BANK OF SHELBY	
RC Energy Montana Ltd. Calgary AB	601 G5	Released Amount: Purpose:	8/14/2013 \$5,000.00 Single Well Bond
Certificate of Deposit	\$5,000.00	FIRST STATE BANK OF SHELBY	
RC Energy Montana Ltd. Calgary AB	601 G4	Released Amount: Purpose:	8/14/2013 \$5,000.00 Single Well Bond
Certificate of Deposit	\$5,000.00	FIRST STATE BANK OF SHELBY	
RC Energy Montana Ltd. Calgary AB	601 G6	Released Amount: Purpose:	8/14/2013 \$5,000.00 Single Well Bond
Certificate of Deposit	\$5,000.00	FIRST STATE BANK OF SHELBY	
RC Energy Montana Ltd. Calgary AB	601 G3	Released Amount: Purpose:	8/14/2013 \$5,000.00 Single Well Bond
Certificate of Deposit	\$5,000.00	FIRST STATE BANK OF SHELBY	

ALL APPLICATIONS, 10/10/2013 (DRAFT)

Docket	Applicant	Status	Request
425-2013	Kraken Oil & Gas LLC	Default	Vacate Field/Rule
426-2013	Slawson Exploration Company Inc		Exception
427-2013	Slawson Exploration Company Inc		Spacing
428-2013	Slawson Exploration Company Inc		Pooling
429-2013	Slawson Exploration Company Inc		Well Density
430-2013	Slawson Exploration Company Inc		Pooling
431-2013	Slawson Exploration Company Inc		Spacing
432-2013	Slawson Exploration Company Inc		Pooling
433-2013	Slawson Exploration Company Inc		Well Density
434-2013	Burlington Resources Oil & Gas Company LP	Withdrawn	Temp. Spacing
435-2013	Burlington Resources Oil & Gas Company LP	Default	Temp. Spacing
436-2013	Burlington Resources Oil & Gas Company LP	Default	Temp. Spacing
437-2013	Burlington Resources Oil & Gas Company LP	Default	Temp. Spacing
438-2013	Burlington Resources Oil & Gas Company LP	Default	Temp. Spacing
439-2013	Burlington Resources Oil & Gas Company LP	Default	Temp. Spacing
440-2013	Burlington Resources Oil & Gas Company LP	Default	Temp. Spacing
441-2013	Burlington Resources Oil & Gas Company LP	Withdrawn	Temp. Spacing
442-2013	Burlington Resources Oil & Gas Company LP	Default	Temp. Spacing
443-2013	Burlington Resources Oil & Gas Company LP	Default	Temp. Spacing
444-2013	Burlington Resources Oil & Gas Company LP	Default	Temp. Spacing
445-2013	Burlington Resources Oil & Gas Company LP	Default	Temp. Spacing
446-2013	Burlington Resources Oil & Gas Company LP	Default	Temp. Spacing
447-2013	Samson Resources Company		Pooling
448-2013	Samson Resources Company	Withdrawn	Well Density
449-2013	Denbury Onshore, LLC	Default	Class II Permit
450-2013	Denbury Onshore, LLC	Default	Class II Permit
451-2013	Denbury Onshore, LLC	Withdrawn	Class II Permit
452-2013	Whiting Oil and Gas Corporation		Spacing
453-2013	Whiting Oil and Gas Corporation		Pooling
454-2013	Whiting Oil and Gas Corporation		Well Density
455-2013	Whiting Oil and Gas Corporation		Pooling
456-2013	Whiting Oil and Gas Corporation	Default	Spacing Amendment
457-2013	Whiting Oil and Gas Corporation	Default	Temp. Spacing
458-2013	Whiting Oil and Gas Corporation	Default	Spacing Amendment
459-2013	Whiting Oil and Gas Corporation	Default	Spacing Amendment
460-2013	Keesun Corporation		Temp. Spacing
461-2013	Keesun Corporation		Well Density
462-2013	American Midwest Oil & Gas Corp.		Field Amendment
463-2013	American Midwest Oil & Gas Corp.		Reduction
464-2013	Continental Resources Inc		Spacing
465-2013	Continental Resources Inc		Spacing

ALL APPLICATIONS, 10/10/2013 (DRAFT)

466-2013	Continental Resources Inc		Spacing
467-2013	Continental Resources Inc		Spacing
468-2013	Continental Resources Inc		Spacing
469-2013	Continental Resources Inc		Pooling
470-2013	Continental Resources Inc		Spacing
471-2013	Continental Resources Inc		Pooling
472-2013	Continental Resources Inc	Continued	Spacing
473-2013	Continental Resources Inc	Withdrawn	Well Density
474-2013	Continental Resources Inc		Spacing
475-2013	Continental Resources Inc	Withdrawn	Well Density
476-2013	Continental Resources Inc		Spacing
477-2013	Continental Resources Inc		Pooling
478-2013	Continental Resources Inc		Well Density
479-2013	Continental Resources Inc	Default	Well Density
480-2013	Continental Resources Inc	Default	Well Density
481-2013	Continental Resources Inc	Default	Well Density
482-2013	Continental Resources Inc	Default	Well Density
483-2013	Continental Resources Inc	Default	Well Density
484-2013	Continental Resources Inc	Default	Well Density
485-2013	Continental Resources Inc	Default	Well Density
486-2013	Continental Resources Inc	Default	Well Density
487-2013	Continental Resources Inc	Default	Well Density
488-2013	Continental Resources Inc		Enhanced Recovery
489-2013	Continental Resources Inc	Default	Class II Permit
490-2013	Oasis Petroleum, Inc.	??	Spacing Amendment
491-2013	Oasis Petroleum, Inc.	Withdrawn	Spacing
492-2013	Oasis Petroleum, Inc.	Withdrawn	Pooling
493-2013	Oasis Petroleum, Inc.	Protested	Temp. Spacing
494-2031	Black Gold Energy Services Incorporated	Continued	Class II Permit
476-2012	Oasis Petroleum, Inc.	Continued	Pooling
736-2012	Oasis Petroleum, Inc.	Continued	Spacing
737-2012	Oasis Petroleum, Inc.	Continued	Pooling
738-2012	Oasis Petroleum, Inc.	Continued	Well Density
746-2012	Oasis Petroleum, Inc.	Continued	Pooling
174-2013	XTO Energy Inc.	Continued	Pooling
304-2013	Continental Resources Inc		Spacing
305-2013	Continental Resources Inc		Pooling
306-2013	Continental Resources Inc		Well Density
345-2013	Statoil Oil & Gas LP	Continued	Spacing
346-2013	Statoil Oil & Gas LP	Continued	Pooling
347-2013	Statoil Oil & Gas LP	Continued	Pooling
348-2013	Statoil Oil & Gas LP	Continued	Well Density

ALL APPLICATIONS, 10/10/2013 (DRAFT)

396-2013	Continental Resources Inc		Spacing
397-2013	Continental Resources Inc		Well Density
418-2013	Denbury Onshore, LLC	Default	Class II Permit
495-2013	Bensun Energy, LLC		Show-Cause

DEFAULT DOCKET, 10/10/2013 (DRAFT)

Docket	Applicant	Status	Request
425-2013	Kraken Oil & Gas LLC	Default	Vacate Field/Rule
435-2013	Burlington Resources Oil & Gas Company LP	Default	Temp. Spacing
436-2013	Burlington Resources Oil & Gas Company LP	Default	Temp. Spacing
437-2013	Burlington Resources Oil & Gas Company LP	Default	Temp. Spacing
438-2013	Burlington Resources Oil & Gas Company LP	Default	Temp. Spacing
439-2013	Burlington Resources Oil & Gas Company LP	Default	Temp. Spacing
440-2013	Burlington Resources Oil & Gas Company LP	Default	Temp. Spacing
442-2013	Burlington Resources Oil & Gas Company LP	Default	Temp. Spacing
443-2013	Burlington Resources Oil & Gas Company LP	Default	Temp. Spacing
444-2013	Burlington Resources Oil & Gas Company LP	Default	Temp. Spacing
445-2013	Burlington Resources Oil & Gas Company LP	Default	Temp. Spacing
446-2013	Burlington Resources Oil & Gas Company LP	Default	Temp. Spacing
449-2013	Denbury Onshore, LLC	Default	Class II Permit
450-2013	Denbury Onshore, LLC	Default	Class II Permit
456-2013	Whiting Oil and Gas Corporation	Default	Spacing Amendment
457-2013	Whiting Oil and Gas Corporation	Default	Temp. Spacing
458-2013	Whiting Oil and Gas Corporation	Default	Spacing Amendment
459-2013	Whiting Oil and Gas Corporation	Default	Spacing Amendment
479-2013	Continental Resources Inc	Default	Well Density
480-2013	Continental Resources Inc	Default	Well Density
481-2013	Continental Resources Inc	Default	Well Density
482-2013	Continental Resources Inc	Default	Well Density
483-2013	Continental Resources Inc	Default	Well Density
484-2013	Continental Resources Inc	Default	Well Density
485-2013	Continental Resources Inc	Default	Well Density
486-2013	Continental Resources Inc	Default	Well Density
487-2013	Continental Resources Inc	Default	Well Density
489-2013	Continental Resources Inc	Default	Class II Permit
418-2013	Denbury Onshore, LLC	Default	Class II Permit

APPLICATIONS TO HEAR, 10/10/2013 (DRAFT)

Docket	Applicant	Status	Request
426-2013	Slawson Exploration Company Inc		Exception
427-2013	Slawson Exploration Company Inc		Spacing
428-2013	Slawson Exploration Company Inc		Pooling
429-2013	Slawson Exploration Company Inc		Well Density
430-2013	Slawson Exploration Company Inc		Pooling
431-2013	Slawson Exploration Company Inc		Spacing
432-2013	Slawson Exploration Company Inc		Pooling
433-2013	Slawson Exploration Company Inc		Well Density
447-2013	Samson Resources Company		Pooling
452-2013	Whiting Oil and Gas Corporation		Spacing
453-2013	Whiting Oil and Gas Corporation		Pooling
454-2013	Whiting Oil and Gas Corporation		Well Density
455-2013	Whiting Oil and Gas Corporation		Pooling
460-2013	Keesun Corporation		Temp. Spacing
461-2013	Keesun Corporation		Well Density
462-2013	American Midwest Oil & Gas Corp.		Field Amendment
463-2013	American Midwest Oil & Gas Corp.		Reduction
464-2013	Continental Resources Inc		Spacing
465-2013	Continental Resources Inc		Spacing
466-2013	Continental Resources Inc		Spacing
467-2013	Continental Resources Inc		Spacing
468-2013	Continental Resources Inc		Spacing
469-2013	Continental Resources Inc		Pooling
470-2013	Continental Resources Inc		Spacing
471-2013	Continental Resources Inc		Pooling
474-2013	Continental Resources Inc		Spacing

APPLICATIONS TO HEAR, 10/10/2013 (DRAFT)

476-2013	Continental Resources Inc		Spacing
477-2013	Continental Resources Inc		Pooling
478-2013	Continental Resources Inc		Well Density
488-2013	Continental Resources Inc		Enhanced Recovery
304-2013	Continental Resources Inc		Spacing
305-2013	Continental Resources Inc		Pooling
306-2013	Continental Resources Inc		Well Density
396-2013	Continental Resources Inc		Spacing
397-2013	Continental Resources Inc		Well Density
490-2013	Oasis Petroleum, Inc.	??	Spacing Amendment
493-2013	Oasis Petroleum, Inc.	Protested	Temp. Spacing
495-2013	Bensun Energy, LLC		Show-Cause

Docket Summary

10/10/2013 Hearing

425-2013	Kraken Oil & Gas LLC	Vacate Order 64-2004 (TSU, 26N-52E-4: all, 9: all). Default request.	Default	2-section spacing requested by EOG during 2004.	<input type="checkbox"/>
426-2013	Slawson Exploration Company Inc	Exception to produce, Bakken/Three Forks Formation, south lateral does not comply with setback provision (Order 227-2012), 23N-53E-4 (Python 3-4MLH).		PSU, Order 199-2007; additional wells, 227-2012.	<input type="checkbox"/>
427-2013	Slawson Exploration Company Inc	Permanent spacing unit, Bakken/Three Forks Formation, 24N-52E-26: all (Archer Federal 1-26H).		TSU, Order 152-2012. Related applications, Dockets 427, 428, and 429-2013.	<input type="checkbox"/>
428-2013	Slawson Exploration Company Inc	Pool, permanent spacing unit, Bakken/Three Forks Formation, 24N-52E-26: all (Archer Federal 1-26H). Non-consent penalties requested.		Related applications, Dockets 427, 428, and 429-2013.	<input type="checkbox"/>
429-2013	Slawson Exploration Company Inc	Authorization to drill up to four additional Bakken/Three Forks wells, permanent spacing unit, 24N-52E-26: all, 200' heel/toe, 660' lateral setback. Default request.		Related applications, Dockets 427, 428, and 429-2013.	<input type="checkbox"/>
430-2013	Slawson Exploration Company Inc	Pool, permanent spacing unit, Bakken/Three Forks Formation, 23N-52E-2: all (Desperado Federal 1-2H). Non-consent penalties requested.		PSU, Order 454-2012.	<input type="checkbox"/>
431-2013	Slawson Exploration Company Inc	Permanent spacing unit, Bakken/Three Forks Formation, 21N-59E-21: all, 22: all (Dirk Federal 1-22-21H).		TSU, Order 148-2012. Related applications, Dockets 431, 432, and 433-2013.	<input type="checkbox"/>
432-2013	Slawson Exploration Company Inc	Pool, permanent spacing unit, Bakken/Three Forks Formation, 21N-59E-21: all, 22: all (Dirk Federal 1-22-21H). Non-consent penalties requested.		Related applications, Dockets 431, 432, and 433-2013.	<input type="checkbox"/>
433-2013	Slawson Exploration Company Inc	Authorization to drill up to four additional Bakken/Three Forks wells, permanent spacing unit, 21N-59E-21: all, 22: all, 200' heel/toe, 660' lateral setback. Default request.		Related applications, Dockets 431, 432, and 433-2013.	<input type="checkbox"/>
434-2013	Burlington Resources Oil & Gas Company LP	Temporary spacing unit, Bakken/Three Forks Formation, 23N-53E-7: all, 200' heel/toe, 660' lateral setbacks. Apply for permanent spacing within 90 days of successful completion. Default request.	Withdrawn	Withdrawn, ltr recd 9/25/2013.	<input type="checkbox"/>
435-2013	Burlington Resources Oil & Gas Company LP	Temporary spacing unit, Bakken/Three Forks Formation, 23N-53E-9: all, 200' heel/toe, 660' lateral setbacks. Apply for permanent spacing within 90 days of successful completion. Default request.	Default		<input type="checkbox"/>
436-2013	Burlington Resources Oil & Gas Company LP	Temporary spacing unit, Bakken/Three Forks Formation, 23N-53E-11: all, 200' heel/toe, 660' lateral setbacks. Apply for permanent spacing within 90 days of successful completion. Default request.	Default		<input type="checkbox"/>
437-2013	Burlington Resources Oil & Gas Company LP	Temporary spacing unit, Bakken/Three Forks Formation, 23N-53E-13: all, 200' heel/toe, 660' lateral setbacks. Apply for permanent spacing within 90 days of successful completion. Default request.	Default		<input type="checkbox"/>

438-2013	Burlington Resources Oil & Gas Company LP	Temporary spacing unit, Bakken/Three Forks Formation, 23N-53E-15: all, 200' heel/toe, 660' lateral setbacks. Apply for permanent spacing within 90 days of successful completion. Default request.	Default		<input type="checkbox"/>
439-2013	Burlington Resources Oil & Gas Company LP	Temporary spacing unit, Bakken/Three Forks Formation, 23N-53E-17: all, 200' heel/toe, 660' lateral setbacks. Apply for permanent spacing within 90 days of successful completion. Default request.	Default		<input type="checkbox"/>
440-2013	Burlington Resources Oil & Gas Company LP	Temporary spacing unit, Bakken/Three Forks Formation, 23N-53E-21: all, 200' heel/toe, 660' lateral setbacks. Apply for permanent spacing within 90 days of successful completion. Default request.	Default		<input type="checkbox"/>
441-2013	Burlington Resources Oil & Gas Company LP	Temporary spacing unit, Bakken/Three Forks Formation, 23N-53E-27: all, 200' heel/toe, 660' lateral setbacks. Apply for permanent spacing within 90 days of successful completion. Default request.	Withdrawn	<i>Withdrawn, ltr recd 9/25/2013.</i>	<input type="checkbox"/>
442-2013	Burlington Resources Oil & Gas Company LP	Temporary spacing unit, Bakken/Three Forks Formation, 23N-54E-15: all, 200' heel/toe, 660' lateral setbacks. Apply for permanent spacing within 90 days of successful completion. Default request.	Default		<input type="checkbox"/>
443-2013	Burlington Resources Oil & Gas Company LP	Temporary spacing unit, Bakken/Three Forks Formation, 23N-54E-17: all, 200' heel/toe, 660' lateral setbacks. Apply for permanent spacing within 90 days of successful completion. Default request.	Default		<input type="checkbox"/>
444-2013	Burlington Resources Oil & Gas Company LP	Temporary spacing unit, Bakken/Three Forks Formation, 23N-54E-19: all, 200' heel/toe, 660' lateral setbacks. Apply for permanent spacing within 90 days of successful completion. Default request.	Default		<input type="checkbox"/>
445-2013	Burlington Resources Oil & Gas Company LP	Temporary spacing unit, Bakken/Three Forks Formation, 23N-54E-21: all, 200' heel/toe, 660' lateral setbacks. Apply for permanent spacing within 90 days of successful completion. Default request.	Default		<input type="checkbox"/>
446-2013	Burlington Resources Oil & Gas Company LP	Temporary spacing unit, Bakken/Three Forks Formation, 23N-54E-23: all, 200' heel/toe, 660' lateral setbacks. Apply for permanent spacing within 90 days of successful completion. Default request.	Default		<input type="checkbox"/>
447-2013	Samson Resources Company	Pool, permanent spacing unit, Bakken/Three Forks Formation, 33N-56E-6: all, 7: all (Riva Ridge 06-07-2H). Non-joinder penalties requested.		<i>PSU, Order 624-2013. (Three Forks well.)</i>	<input type="checkbox"/>
448-2013	Samson Resources Company	Exception to recomplete as additional well in permanent spacing unit, Duperow Formation commingled with Red River Formation, 30N-59E-18: W/2 (Sunmark Crusch Fee 1-R located 917' FNL/919' FWL). Default request.	Withdrawn	<i>PSU, Red River B & C, W/2 of Section 18 (Fee 1-R well) Order 75-1985. Statewide TSU, SW/4 for 14-18 well. Withdrawn, fax recd 9/27/2013.</i>	<input type="checkbox"/>
449-2013	Denbury Onshore, LLC	Class II saltwater disposal permit, Mission Canyon Formation, Federal 22-02A, 6N-60E-2: 2080' FNL/1992' FWL (SE/4NW/4), API #025-05156.	Default		<input type="checkbox"/>
450-2013	Denbury Onshore, LLC	Class II enhanced recovery permit, Stony Mountain (Ordovician) Formation, South Pine Unit 22-33, 12N-57E-33: 1850' FNL/1950' FWL (SE/4NW/4), API #109-21185.	Default		<input type="checkbox"/>
451-2013	Denbury Onshore, LLC	Class II saltwater disposal permit, Dakota/Swift Formations, ELOB 2-18B, 7N-61E-18: 660' FSL/660' FWL (SW/4SW/4), API #025-21261.	Withdrawn	<i>Withdrawn by applicant, 10/8/2013.</i>	<input type="checkbox"/>

452-2013	Whiting Oil and Gas Corporation	Permanent spacing unit, Bakken/Three Forks Formation, 25N-58E-27: all, 34: all (Sundheim 21-27-1H).		TSU, Order 380-2011 (Special Statewide); setbacks amended by Order 632-2012. Related Dockets 452, 453, 454-2013.	<input type="checkbox"/>
453-2013	Whiting Oil and Gas Corporation	Pool, permanent spacing unit, Bakken/Three Forks Formation, 25N-58E-27: all, 34: all (Sundheim 21-27-1H). Non-consent penalties requested.		Related Dockets 452, 453, 454-2013.	<input type="checkbox"/>
454-2013	Whiting Oil and Gas Corporation	Authorization to drill up to three additional Bakken/Three Forks wells, permanent spacing unit, 25N-58E-27: all, 34: all, 200' heel/toe, 500' lateral setback. Default request.		Related Dockets 452, 453, 454-2013.	<input type="checkbox"/>
455-2013	Whiting Oil and Gas Corporation	Pool, permanent spacing unit, Bakken/Three Forks Formation, 25N-58E-5: all, 8: all (Sundheim 44-8-3H). Non-consent penalties requested.		PSU, Order 325-2013.	<input type="checkbox"/>
456-2013	Whiting Oil and Gas Corporation	Amend Order 380-2011 to allow 500' lateral, 200' heel/toe setbacks in temporary spacing unit, Bakken/Three Forks Formation, 24N-59E-16: all, 17: all. Apply for permanent spacing within 90 days of successful completion. Operations must commence within one year of date of order. Default request.	Default	(380-2011 - Special Statewide spacing.)	<input type="checkbox"/>
457-2013	Whiting Oil and Gas Corporation	Vacate Order 455-2011 (24N-60E-17: all, 20: all). Temporary spacing unit, Bakken/Three Forks Formation, 24N-60E-5: all, 8: all, 17: all, 200' heel/toe, 500' lateral setbacks. Apply for permanent spacing within 90 days of successful completion. Operations must commence within one year of date of order. Default request.	Default	(Correcting potential orphan tracts; amending setbacks.) Somewhat related Dockets 457, 458, 459-2013.	<input type="checkbox"/>
458-2013	Whiting Oil and Gas Corporation	Amend Order 380-2011 to allow 500' lateral, 200' heel/toe setbacks in temporary spacing unit, Bakken/Three Forks Formation, 24N-60E-20: all, 29: all. Apply for permanent spacing within 90 days of successful completion. Operations must commence within one year of date of order. Default request.	Default	Somewhat related Dockets 457, 458, 459-2013.	<input type="checkbox"/>
459-2013	Whiting Oil and Gas Corporation	Amend Order 380-2011 to allow 500' lateral, 200' heel/toe setbacks in temporary spacing unit, Bakken/Three Forks Formation, 24N-60E-31: all, 32: all. Apply for permanent spacing within 90 days of successful completion. Operations must commence within one year of date of order. Default request.	Default	Somewhat related Dockets 457, 458, 459-2013.	<input type="checkbox"/>
460-2013	Keesun Corporation	Temporary 20-acre spacing units for oil wells with projected depth of less than 2500', surface to the top of the Madison Group, 36N-3W-16: N/2, NW/4SW/4, SE/4SW/4, SE/4, 20: E/2NE/4, 21: NW/4NW/4, 220' setback. Requests each 20-acre spacing unit consist of either the W/2 & E/2 or N/2 & S/2 of qtr-qtr section to be selected by applicant. Default request.		Will hear - 220' setbacks to external boundaries.	<input type="checkbox"/>
461-2013	Keesun Corporation	Authorization to drill second Sunburst Formation well in each qtr-qtr section (statewide spacing), 36N-3W-16: SW/4SW/4, NE/4SW/4, 17: SE/4SE/4, 220' setback. Default request.		Will hear - 220' setbacks to external boundaries.	<input type="checkbox"/>

462-2013	American Midwest Oil & Gas Corp.	Vacate Order 46-1984 relating to and covering 35N-1E-32: NE/4, Nisku Formation. Default request.		80-acre PSUs, E/2 & W/2 of quarter section (Order 46-1984).	<input type="checkbox"/>
				<i>Will hear; change of permanent spacing units.</i>	
463-2013	American Midwest Oil & Gas Corp.	Vacate Orders 46-1984 and 9-1986 by removing certain lands in 34N-1E & 35N-1E. Default request.		80-acre PSUs, E/2 & W/2 of quarter section (Order 46-1984). Enlargement, Order 9-1986. <i>Will hear; change of permanent spacing units.</i>	<input type="checkbox"/>
464-2013	Continental Resources Inc	Permanent spacing unit, Bakken/Three Forks Formation, 23N-56E-21: all, 22: all, 27: all, 28: all (Alice/Thomas HSU).		Overlapping TSU, Order 288-2008.	<input type="checkbox"/>
465-2013	Continental Resources Inc	Permanent spacing unit, Bakken/Three Forks Formation, 24N-56E-31: all, 23N-56E-6: all, 23N-55E-1: all, 24N-55E-36: all (Audrey Federal HSL)		Overlapping TSU, Order 282-2008.	<input type="checkbox"/>
466-2013	Continental Resources Inc	Permanent spacing unit, Bakken/Three Forks Formation, 23N-56E-9: all, 10: all, 15: all, 16: all (Prevost/Mondalin HSU).		Overlapping TSU, Order 274-2008.	<input type="checkbox"/>
467-2013	Continental Resources Inc	Permanent spacing unit, Bakken/Three Forks Formation, 23N-56E-22: all, 23: all, 26: all, 27: all (Thomas/Bettye HSU).		Overlapping TSU, Order 275-2008.	<input type="checkbox"/>
468-2013	Continental Resources Inc	Permanent spacing unit, Bakken/Three Forks Formation, 23N-56E-19: all, 30: all, 23N-55E-24: all, 25: all (Earl/Rita HSU).		Overlapping TSU, Order 342-2008. <i>Related Dockets 468, 469-2013.</i>	<input type="checkbox"/>
469-2013	Continental Resources Inc	Pool, permanent spacing unit, Bakken/Three Forks Formation, 23N-56E-19: all, 30: all, 23N-55E-24: all, 25: all (Earl/Rita HSU). Non-joinder penalties requested.		<i>Related Dockets 468, 469-2013.</i>	<input type="checkbox"/>
470-2013	Continental Resources Inc	Permanent spacing unit, Bakken/Three Forks Formation, 23N-56E-7: all, 18: all, 23N-55E-12: all, 13: all (Constance/Linnea HSU).		Overlapping TSU, Order 285-2008. <i>Related Dockets 470, 471-2003.</i>	<input type="checkbox"/>
471-2013	Continental Resources Inc	Pool, permanent spacing unit, Bakken/Three Forks Formation, 23N-56E-7: all, 18: all, 23N-55E-12: all, 13: all (Constance/Linnea HSU). Non-joinder penalties requested.		<i>Related Dockets 470, 471-2003.</i>	<input type="checkbox"/>
472-2013	Continental Resources Inc	Permanent spacing unit, Bakken/Three Forks Formation, 23N-53E-34: all (Lepel 1-34H).	Continued	Statewide TSU, toe setback exception by Order 647-2012. <i>Related Dockets 472, 473-2013. NOTICE OBJECTION - THOMAS HALVORSON Continued to December, email recd 10/1/2013.</i>	<input type="checkbox"/>
473-2013	Continental Resources Inc	Authorization to drill up to three additional Bakken/Three Forks wells, permanent spacing unit, 23N-53E-34: all, 200' heel/toe, 660' lateral setback.	Withdrawn	<i>Related Dockets 472, 473-2013.</i> <i>Withdrawn, email recd 10/1/2013.</i>	<input type="checkbox"/>
474-2013	Continental Resources Inc	Permanent spacing unit, Bakken/Three Forks Formation, 23N-54E-26: all (Fitzsimons 1-26H).		Statewide TSU, toe setback exception by Order 71-2013. <i>Related Dockets 474, 475-2013.</i>	<input type="checkbox"/>

475-2013	Continental Resources Inc	Authorization to drill up to three additional Bakken/Three Forks wells, permanent spacing unit, 23N-54E-26: all, 200' heel/toe, 660' lateral setback.	Withdrawn	Related Dockets 474, 475-2013. Withdrawn, email recd 10/1/2013.	<input type="checkbox"/>
476-2013	Continental Resources Inc	Permanent spacing unit, Bakken/Three Forks Formation, 29N-59E-6: all, 7: all (Foxy 1-6H).		TSU, special statewide (Order 380-2011). Related Dockets 476, 477, 478-2013.	<input type="checkbox"/>
477-2013	Continental Resources Inc	Pool, permanent spacing unit, Bakken/Three Forks Formation, 29N-59E-6: all, 7: all (Foxy 1-6H). Non-joinder penalties requested.		Related Dockets 476, 477, 478-2013.	<input type="checkbox"/>
478-2013	Continental Resources Inc	Authorization to drill up to three additional Bakken/Three Forks wells, permanent spacing unit, 29N-59E-6: all, 7: all, 200' heel/toe, 500' lateral setback.		Related Dockets 476, 477, 478-2013.	<input type="checkbox"/>
479-2013	Continental Resources Inc	Authorization to drill up to three additional Bakken/Three Forks wells, permanent spacing unit, 23N-54E-18: all, 200' heel/toe, 660' lateral setback. Default request.	Default	PSU, Order 352-2007.	<input type="checkbox"/>
480-2013	Continental Resources Inc	Authorization to drill up to three additional Bakken/Three Forks wells, permanent spacing unit, 23N-54E-8: all, 200' heel/toe, 660' lateral setback. Default request.	Default	PSU, Order 88-2007.	<input type="checkbox"/>
481-2013	Continental Resources Inc	Authorization to drill up to three additional Bakken/Three Forks wells, permanent spacing unit, 23N-54E-10: all, 200' heel/toe, 660' lateral setback. Default request.	Default	PSU, Order 393-2006.	<input type="checkbox"/>
482-2013	Continental Resources Inc	Amend Order 106-2009 to allow two additional Bakken Formation well in the permanent spacing unit comprised of 23N-56E-25: all, 23N-57E-30: all, 200' heel/toe, 660' lateral setback. Default request.	Default	PSU, Order 445-2005. Additional wells, Orders 470-2005 (drilled), 106-2009.	<input type="checkbox"/>
483-2013	Continental Resources Inc	Amend Order 392-2006 to allow three additional Bakken Formation well in the permanent spacing unit comprised of 25N-55E-7: all, 25N-54E-12: all, 200' heel/toe, 660' lateral setback. Default request.	Default	PSU, Order 391-2006. One additional well, 660' setback, by Order 392-2006. (Vacate 392-2006 ?? Not drilled.)	<input type="checkbox"/>
484-2013	Continental Resources Inc	Authorization to drill up to three additional Bakken/Three Forks wells, permanent spacing unit, 26N-53E-1: all, 12: all, 200' heel/toe, 500' lateral setback. Default request.	Default	PSU, Order 130-2011.	<input type="checkbox"/>
485-2013	Continental Resources Inc	Authorization to drill up to three additional Bakken/Three Forks wells, permanent spacing unit, 25N-55E-33: all, 24N-55E-2: all, 200' heel/toe, 500' lateral setback. Default request.	Default	PSU, Order 157-2005.	<input type="checkbox"/>
486-2013	Continental Resources Inc	Authorization to drill up to three additional Bakken/Three Forks wells, permanent spacing unit, 23N-56E-8: all, 17: all, 200' heel/toe, 660' lateral setback. Default request.	Default	PSU, Order 161-2005. additional wells (drilled), 660' SB, Orders 326-2005, 170-2008.	<input type="checkbox"/>
487-2013	Continental Resources Inc	Authorization to drill up to three additional Bakken/Three Forks wells, permanent spacing unit, 24N-55E-35: all, 23N-55E-2: all, 200' heel/toe, 660' lateral setback. Default request.	Default	PSU, Order 418-2005. Additional wells, 660' setback, Orders 457-2005, 154-2007 (drilled?). Overlapping TSU, Order 278-2008 (Secs. 2, 35, 3, 34)	<input type="checkbox"/>

488-2013	Continental Resources Inc	Class II pilot enhanced recovery project, Bakken Formation, Staci 3-11H, permanent spacing unit 23N-55E-11: all, 14: all.			<input type="checkbox"/>
489-2013	Continental Resources Inc	Class II Injection permit, enhanced recovery, Bakken Formation, Staci 3-11H, 23N-55E-11: 330' FNL/1700' FWL (NE/4NW/4), API #083-22748.	Default		<input type="checkbox"/>
490-2013	Oasis Petroleum, Inc.	Amend Order 380-2011 to allow 500' lateral, 200' heel/toe setbacks in temporary spacing unit, Bakken/Three Forks Formation, 26N-58E-6: all, 7: all. Apply for permanent spacing within 90 days of successful completion. Operations must commence within one year of date of order. Default request.			<input type="checkbox"/>
491-2013	Oasis Petroleum, Inc.	Permanent spacing unit, Bakken/Three Forks Formation, 26N-58E-6: all, 7: all (Matador Federal 2658 43-7H).	Withdrawn	TSU - special statewide (Order 380-2011). Related Dockets 491, 492-2013. Withdrawn, ltr recd 9/25/2013.	<input type="checkbox"/>
492-2013	Oasis Petroleum, Inc.	Pool, permanent spacing unit, Bakken/Three Forks Formation, 26N-58E-6: all, 7: all (Matador Federal 2658 43-7H).	Withdrawn	Related Dockets 491, 492-2013. Withdrawn, ltr recd 9/25/2013.	<input type="checkbox"/>
493-2013	Oasis Petroleum, Inc.	Temporary spacing unit, Bakken/Three Forks Formation, two horizontal wells, 27N-58E-29: all, 30: all, 31: all, 32: all, 200' heel/toe, 500' lateral setbacks. Apply for permanent spacing within 90 days of successful completion. Default request.	Protested	Protest - Shane Garman.	<input type="checkbox"/>
494-2031	Black Gold Energy Services Incorporated	Class II saltwater disposal permit, Dakota Formation, Briske 4-9H, 29N-58E-9: 300' FNL/300' FWL (NW/4NW/4), API #085-21709.	Continued		<input type="checkbox"/>
476-2012	Oasis Petroleum, Inc.	Pool, permanent spacing unit, Bakken/Three Forks Formation, 27N-58E-4: all, 9: all (Signal Butte Federal 2758 43-9H). Non-consent penalties requested.	Continued	PSU, Order 352-2012; additional wells, Order 353-2012. Continued, ltr recd 9/25/2013.	<input type="checkbox"/>
736-2012	Oasis Petroleum, Inc.	Permanent spacing unit, Bakken/Three Forks Formation, 27N-58E-27: all, 28: all (Betsy Federal 2758 24-29H).	Continued	TSU, Order 441-2011 - 1320/200. Related Dockets 736, 737, 738-2012. Continued to December, ltr recd 9/25/2013.	<input type="checkbox"/>
737-2012	Oasis Petroleum, Inc.	Pool, permanent spacing unit, Bakken/Three Forks Formation, 27N-58E-27: all, 28: all (Betsy Federal 2758 24-29H). Non-consent penalties requested.	Continued	Related Dockets 736, 737, 738-2012. Continued to December, ltr recd 9/25/2013.	<input type="checkbox"/>
738-2012	Oasis Petroleum, Inc.	Exception to drill up to four additional wells, permanent spacing unit, Bakken/Three Forks Formation, 27N-58E-27: all, 28: all, 200' heel/toe, 500' lateral setbacks. Default request.	Continued	Related Dockets 736, 737, 738-2012. Continued to December, ltr recd 9/25/2013.	<input type="checkbox"/>
746-2012	Oasis Petroleum, Inc.	Pool, permanent spacing unit, Bakken/Three Forks Formation, 28N-58E-29: all, 32: all (Piercy Federal 2758 13-5H). Non-consent penalties requested.	Continued	PSU, Order 608-2012, Additional wells, Order 609-2012. Continued to December, ltr recd 9/25/2013.	<input type="checkbox"/>

174-2013	XTO Energy Inc.	Pool, permanent spacing unit, Bakken/Three Forks Formation, 28N-57E-35: all, 36: all (State 42X-36C). Non-consent penalties requested.	Continued	PSU, Order 128-2013; additional wells, Order 129-2013. Continued to December, ltr recd 9/25/2013.	<input type="checkbox"/>
304-2013	Continental Resources Inc	Permanent spacing unit, Bakken/Three Forks Formation, 25N-54E-4: all, 5: all (Charlie 1-5H).		Overlapping TSU, Order 199-2012; (Amestoy Protest). Related Dockets 304, 305, 306-2013. Ltr of protest? Pennie Muth, Barbee Hekkel, Sonja Smart	<input type="checkbox"/>
305-2013	Continental Resources Inc	Pool, permanent spacing unit, Bakken/Three Forks Formation, 25N-54E-4: all, 5: all (Charlie 1-5H). Non-joinder penalties requested.		Related Dockets 304, 305, 306-2013.	<input type="checkbox"/>
306-2013	Continental Resources Inc	Exception to drill up to three additional wells, permanent spacing unit, Bakken/Three Forks Formation, 25N-54E-4: all, 5: all, 200' heel/toe, 500' lateral setbacks. Default request.		Related Dockets 304, 305, 306-2013.	<input type="checkbox"/>
345-2013	Statoil Oil & Gas LP	Permanent spacing unit, Bakken/Three Forks Formation, 25N-59E-25: all, 26: all, 35: all, 36: all (Sundheim 26-35 #1-H and Sundheim 26-35 #2-H).	Continued	TSU, Order 188-2011, 2 wells authorized. Related Dockets 345, 346, 347, 348-2013. Continued to December, email recd 9/30/2013.	<input type="checkbox"/>
346-2013	Statoil Oil & Gas LP	Pool, permanent spacing unit, Bakken/Three Forks Formation, 25N-59E-25: all, 26: all, 35: all, 36: all (Sundheim 26-35 #1-H). Non-joinder penalties requested.	Continued	Related Dockets 345, 346, 347, 348-2013. Continued to December, email recd 9/30/2013.	<input type="checkbox"/>
347-2013	Statoil Oil & Gas LP	Pool, permanent spacing unit, Bakken/Three Forks Formation, 25N-59E-25: all, 26: all, 35: all, 36: all (Sundheim 26-35 #2-H). Non-joinder penalties requested.	Continued	Related Dockets 345, 346, 347, 348-2013. Continued to December, email recd 9/30/2013.	<input type="checkbox"/>
348-2013	Statoil Oil & Gas LP	Exception to drill up to five additional wells, permanent spacing unit, Bakken/Three Forks Formation, 25N-59E-25: all, 26: all, 35: all, 36: all, 200' heel/toe, 500' lateral setbacks. Default request.	Continued	Related Dockets 345, 346, 347, 348-2013. Continued to December, email recd 9/30/2013.	<input type="checkbox"/>
396-2013	Continental Resources Inc	Permanent spacing unit, Bakken/Three Forks Formation, 23N-53E-28: all (Larry 1-28H).		Statewide TSU, 200' toe/heel by Order 66-2013. Related Dockets 396, 397-2013.	<input type="checkbox"/>
397-2013	Continental Resources Inc	Authorization to drill up to three additional Bakken/Three Forks wells, permanent spacing unit, 23N-53E-28: all, 200' heel/toe, 660' lateral setback.		Related Dockets 396, 397-2013.	<input type="checkbox"/>
418-2013	Denbury Onshore, LLC	Class II disposal permit, Madison Formation, Madison 1 WSW, 8S-54E-27: 2970 FNL/660 FWL (NW/4SW/4), API #075-21799.	Default		<input type="checkbox"/>
495-2013	Bensun Energy, LLC	Show cause, failure to file production reports.			<input type="checkbox"/>

GRANT PROJECT SUMMARY : 2007, 2009, 2011, 2013

10-9-13

2007 & 2011 Southern Tank Battery Grant:

There is \$19,258 left in the C-Brewer contract. Terri has requested Gwen Ungerman to increase the Brewer contract by the remaining grant balance of \$104,241 to assure the project gets finished. Are waiting on soil sampling to get done to determine whether to disc the soils more before freeze-up. There is a lot of junk iron that remains to be hauled off from the site.

2009 Grants:

Northern: Project is completed and contract will expire 12-31-13.

Southern: Project is completed except for one well which will be finished on the upcoming 2009 Northern-Southern grant. Contract expires 12-31-13.

Northern-Southern: This project is to spend the remaining 2009 grant monies of \$263,757. RFP response due date was 10-1-13. LGWS was the only bidder and the bid came in at \$374,709.25 Will have to trim some of the 24 wells from the contract that have lower priority rating. Service/Equip rates have risen and most wells involve significant travel from Cut Bank for the contractor. Staff reviewed the LGWS bid proposal 10-9-13.

2011 Grants:

Eastern: Notice to Proceed given to LGWS. Plan to start on first well 10-9-13.

Northern-Eastern: Notice to Proceed given to LGWS. Plan to start on eastern wells first, sometime within the next week or two.

2013 Grant:

Not funded by legislature.

DEPARTMENT OF NATURAL RESOURCES
AND CONSERVATION
BOARD OF OIL AND GAS CONSERVATION



STEVE BULLOCK, GOVERNOR

OIL AND GAS CONSERVATION DIVISION

STATE OF MONTANA

October 7, 2013

Tom Yates
Denbury Onshore, LLC
5320 Legacy Drive
Plano, TX 75025

Dear Mr. Yates:

A few weeks ago, a Board Field Inspector noticed Denbury had a number of injection wells which were overdue for their mechanical integrity test (MIT). He reminded Denbury personnel of this situation, and instructed them to shut-in the wells which were overdue, until they could demonstrate they had mechanical integrity.

Last week, when he witnessed the MITs of these wells, he noticed that four of them had continued operating, in direct violation of the regulations and his instructions. These wells are:

<u>Well</u>	<u>MIT due date</u>	<u>MIT performed</u>
34-9A	9-4-13	10-2-13
14x-13	9-8-13	10-2-13
42-22B	9-17-13	10-2-13
BN 42-17B	9-23-13	10-2-13

This situation will be brought before the Board at their business meeting this Wednesday, October 9, for enforcement action.

You can contact me at (406) 656-0040 if you have any questions.

Sincerely,

George Hudak
UIC Director

DIVISION OFFICE
1625 ELEVENTH AVENUE
PO BOX 201601
HELENA, MONTANA 59620-1601
(406) 444-6675

TECHNICAL AND
SOUTHERN FIELD OFFICE
2535 ST. JOHNS AVENUE
BILLINGS, MONTANA 59102-4693
(406) 656-0040

NORTHERN FIELD OFFICE
201 MAIN STREET
PO BOX 690
SHELBY, MONTANA 59474-0690
(406) 434-2422

Duties

The petroleum engineer will work closely with other Board professionals – petroleum geologist and UIC director, chief field inspectors, executive secretary, etc.

- Analyze drilling permits and other well work permits to determine if proposals comply with acceptable engineering practice, Board rules and other regulatory requirements.
- Provide technical review and advice to support decisions on appropriate well plugging procedures, completion techniques, safe work procedures to chief field inspector and other staff
- Review environmental impacts of proposals and assist other staff in preparing assessments and evaluating potential drilling locations and associated impacts or related facilities
- monitor and analyze reservoir performance, especially for new or developing fields
- review drilling, completion and recovery methods to advise the Board on approval of various proposals and projects
- research special projects and unique proposals (eg: CO2 sequestration, innovations in well drilling or completions) to determine if changes in regulatory program are needed and recommend changes to the Board
- design and implement appropriate production, processing and transportation options
- estimate the immediate and long-term production capabilities of oil and gas wells and their ultimate recoverable volumes of oil and gas
- review the design of subsurface storage facilities for natural gas, CO2 and produced fluids
- Review and recommend regulatory processes for health, safety and environmental controls on oil and gas operations.

Engineer may work in remote field locations overseeing the collection and analysis of oil and gas well data or supervising the installation or operation of facilities or well plugging, but the petroleum engineer usually works in an office environment.

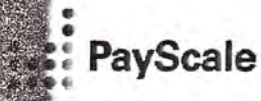
Personal Characteristics

Petroleum engineers need the following characteristics:

- the ability to think logically and solve problems
- good communication skills including written and oral presentation skills
- the ability to work independently or with a team of other staff
- ability to deal with demanding workloads and changing priorities
- skill in dealing with groups and individuals having diverse interests and backgrounds

Educational Requirements

The minimum education requirement for the petroleum engineer is a bachelor's degree in petroleum engineering or a closely related discipline (for example, geological engineering, or a degree in engineering science with a minor in petroleum engineering).



INDIVIDUALS EMPLOYERS

Create an account | Log in

Your Salary Reports Career Research Blogs Special Features Education
Find Jobs

Search All

Search

Browse

Petroleum Engineer Average Salary by Employer Name

Like 0 Share 0

United States » Job » Petroleum Engineer Overview » Petroleum Engineer Salary » by Employer
Updated: 2 Oct 2013

Find Out Exactly What You Should Be Paid

Job Title:

Salary	Hourly Rate	Bonus	Vacation Weeks	Popular Tallies
More				
By Years Experience By Employer Name By City By State or Province By Company Size				
By Annual Company Sales More				

Years in Field/Career:

Job: Petroleum Engineer
Salary by Employer Name

Location:

United States (change)



- OR -

Sign in with **LinkedIn**



Employer Name	National Salary Data (?)	\$0	\$130k	\$
Petroleum Engineer - Chevron Corporation 29 salaries	\$80,131 - \$211,495			
Petroleum Engineer - British Petroleum (BP) 21 salaries	\$51,278 - \$156,838			
Petroleum Engineer - Shell Oil Company 12 salaries	\$86,554 - \$244,679			
Petroleum Engineer - Schlumberger 10 salaries	\$64,429 - \$188,571			
Petroleum Engineer - ConocoPhillips Company 9 salaries	\$99,937 - \$193,968			
Petroleum Engineer - ExxonMobil Corporation 9 salaries	\$87,500 - \$131,000			
Petroleum Engineer - Occidental Petroleum Corporation 6 salaries	\$98,264 - \$152,605			

Who You Know

Petroleum Engineer - EOG Resources, Inc.
5 salaries \$96,133 - \$111,480

Petroleum Engineer - Anadarko Petroleum Corp
5 salaries \$87,500 - \$187,500

Country: United States | Currency: USD | Updated: 2 Oct 2013 | Individuals Reporting: 217

➦ Add to your site |

[Petroleum Engineer](#)

[Register or sign in »](#)

[About LinkedIn »](#)

Subscribe to Our Newsletter

Salary and career advice to put you a step ahead.



Enter your email address

Submit

Follow Us On:

Like 36,898 people like this. Sign Up to see what your friends like.



Follow



PayScale

Like 36,898 people like PayScale.



Facebook social plugin

ADVERTISEMENT

Petroleum Engineer Job Listings

Petroleum Engineer

Oct 04

Bureau of Land Management - Billings, MT

seeking a dynamic and energetic individual to join the team to serve as a Petroleum Engineer in the Montana State Office, Division of Resources, Branch of Fluid... - *Indeed*

[Apply For This Job »](#)

Operations / Petroleum Engineer

Sep 16

Enscicon Corporation - United States

Responsibilities & Qualifications: Petroleum Engineering degree with 1-2 years of engineering experience in the Oil and Gas industry. Conduct a broad scope of... - *Indeed*

[Apply For This Job »](#)

SPE Conference - Society Of Petroleum Engineers Conference - 2013 - New Orleans, LA Job

Sep 10

BASF - United States

SPE Conference - Society Of Petroleum Engineers Conference - 2013 - New Orleans, LA-1302863 BASF is proud to be an Affirmative Action and Equal Opportunity... - *Indeed*

[Apply For This Job »](#)

SNaP

A Survey of Native Proppant Resources within Montana

Interim Report
9 October 2013
John Getty, Instructor
Petroleum Engineering
Montana Tech

©2012 John Getty, Montana Tech

SNaP

Survey of Native Proppant

Collaborative effort between Montana
Bureau of Mines and Geology, Petroleum
Engineering

- Use existing geological maps to identify access to outcrops
- Collect and evaluate samples
- Produce and publish a map product that can be used for development of resources.

©2012 John Getty, Montana Tech

Two Part Project

Expenditure	Part 1	Part 2	
	Yr1	Yr2	Yr3
Personnel	\$48,216	\$89,402	\$71,303
Travel	\$14,300	\$15,800	\$7,460
Supplies	\$13,500	\$6,500	\$2,000
Equipment	\$25,000	\$13,000	\$0
Fac & Admin (IDC 25%)	\$25,254	\$31,176	\$20,191
Totals	\$126,270	\$155,878	\$100,954

Part 1 – Initial Survey of Potential Sources (Year 1)

Part 2 – Detailed Sampling to estimate deposit size, improve estimate of quality (Years 2 and 3)

©2012 John Getty, Montana Tech

Activities over the last year

- Collected >70 samples
- Acquired:
 - Computer controlled press
 - Particle Size Analyzer (\$100k TechFndn)
 - Field equipment
- Created a SNaP Data Base
- Constructed Simplified Reporting Form
- Project Extended to 3 years

©2012 John Getty, Montana Tech

SNaP

A Survey of Native Proppant Resources within Montana

Interim Report
9 October 2013
John Getty, Instructor
Petroleum Engineering
Montana Tech

©2012 John Getty, Montana Tech

SNaP

Survey of Native Proppant

Collaborative effort between Montana
Bureau of Mines and Geology, Petroleum
Engineering

- Use existing geological maps to identify access to outcrops
- Collect and evaluate samples
- Produce and publish a map product that can be used for development of resources.

©2012 John Getty, Montana Tech

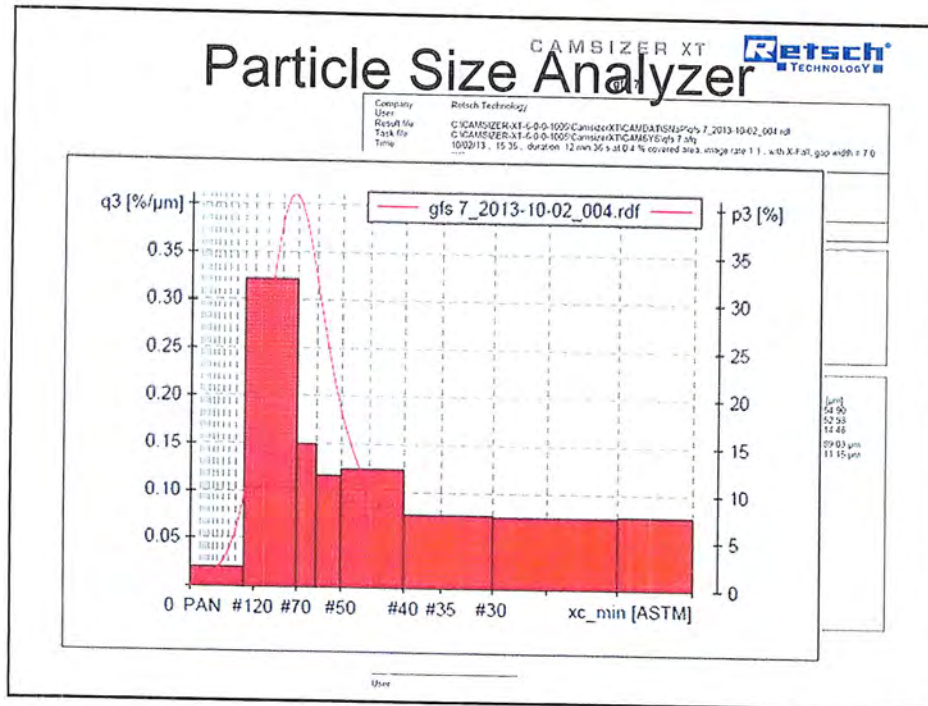
Data Base Input

Proppant LIMS

Use the following form to manage sample records for the site in the proppant database. Required fields are marked with an asterisk (*). When the data is correct, click file to process.

Sample Name	A33-1		
Elevation			
Latitude *	41.6185	Format: 00.000000 (Decimal Degrees)	
Longitude *	-102.16127	Format: 000.000000 (Decimal Degrees)	
Geonethod	NAV-GPS NAVIGATION QUALITY GPS SURVEY USING ABSOLUTE NOCE GLOBAL		
Horizontal Datum *	NORTH AMERICAN DATUM (1983)		
Footings	1112		
Range	20E		
Section	24		
County	BEAUFORT		
Geologic Formation	13H EBY - HIDEY SANDSTONE (OF BIG SMOKEY GROUP)		
100K Quadrangle			
7.5K Quadrangle			
Sample Taken	YES		
Sample Date	7/24/2013		
Sample Name	RAY GUNDERSON		
Sample Notes	50' ON RED HILL RD. ABOUT 4 MI N OF THE "W" ENTERING 100' WIDE FROM THE 100' x 300' x 100' LIME PD - PROBABLY FINEST BASED ON SED LOG & GCS. MAY NOT HAVE OF PD - THROUGH IT HIGH EE TILES		
Histograms	5		
Exhibit	100		
Revisors			

©2012 John Getty, Montana Tech



Reporting Form



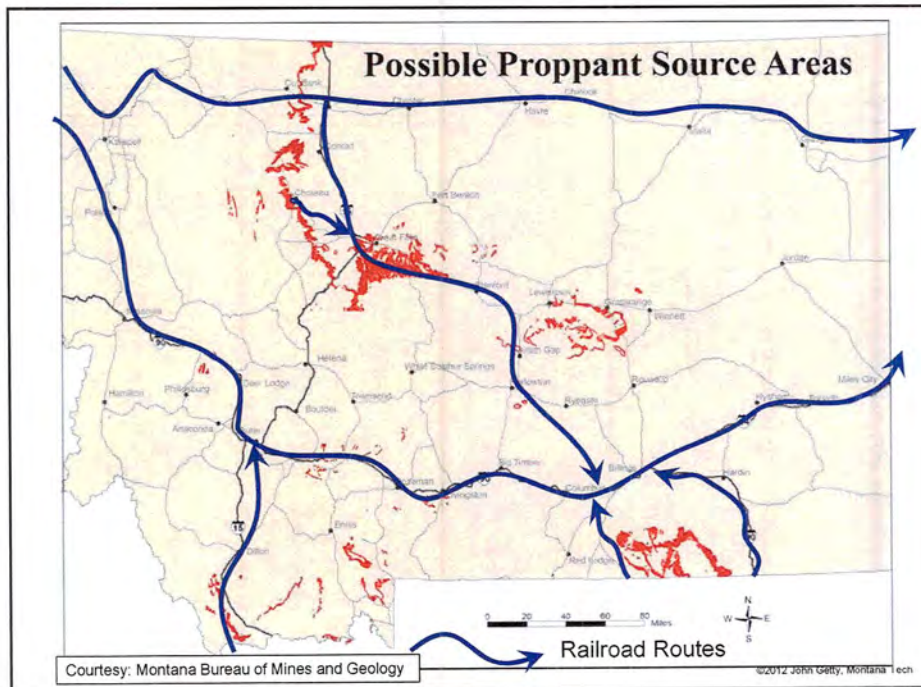
Sample # *	B6-1	Name of Sampler *	Chris Bulau
Date *	06/26/2013	Email	
LAT (decimal) *	48.02272	Formation Name	Virgelle
LOH (decimal) *	110.25464	Thickness (ft)	40
Elevation (ft)	2611	Exposed	
Township		Extent	
Range		Pictures	
Section		How many *	
County	Cascade	Picture Numbers *	

Sample Characteristics	
Hardness	Hard to break apart
Color	White
Grain Size	Sand
Grain Shape	
Reaction to Acid	Yes

Lab Results		
Microscopy	Hopeful? (y,n)	No
Color	Camisizer plot? (y,n)	No
Photo Taken (y,n)	Camisizer S&R	
Ext Sphericity		
Ext Roundness		
Mineralogy		

Cuts Produced	%	Testing Done	Clusters/k
12/20			
16/30	11		
20/40	30		
30/50	56		
40/70	48		
70/140	13		
Other			

©2012 John Getty, Montana Tech



Data Base Input

Proppant LIMS

Use the following form to manage sample records for this site in the proppant database. Required fields are marked with an asterisk (*). When the data is correct, click file to process.

Sample Name: A30-1

Elevation:

Latitude * 46.6885 Format: DD.DDDDDDD (Decimal Degrees)

Longitude * -109.16327 Format: DDD.DDDDDDD (Decimal Degrees)

Geospatial: NAV-GPS NAVIGATION-QUALITY GPS SURVEYED USING ABSOLUTE-MODE GLOBAL

Horizontal Datum * NORTH AMERICAN DATUM (1983)

Township 11N

Range 20E

Section 24

County BEAVERHEAD

Geologic Formation 331FEBBY KIBBEY SANDSTONE (OF BIG SNOWY GROUP)

100K Quadrangle

7.5' Quadrangle

Sample Taken YES

Sample Date 7/24/2013

Sample Name JAY GUNDERSON

Sample Notes SO. ON RED HILL RD, ABOUT 4 MI N OF THE "T" ENTERING 2200123 FROM THE SO. A30-1 VERY LIMBY SO - PROBABLY KIBBEY BASED ON DEP LOG & GEO MAP. NOT SURE OF FR - THOUGHT IT MIGHT BE TYLEX.

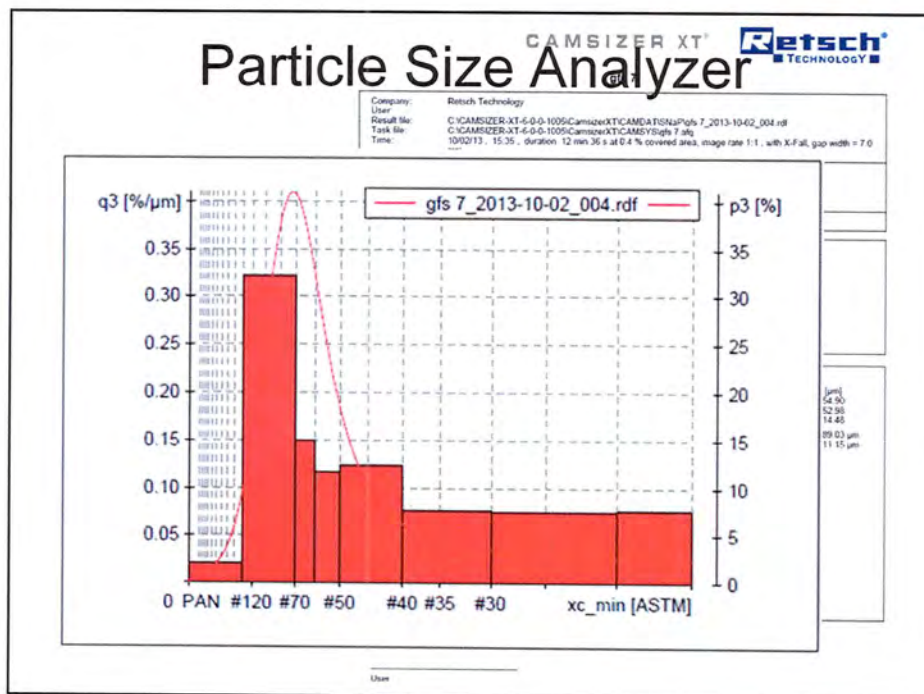
Thickness 5

Extent 100

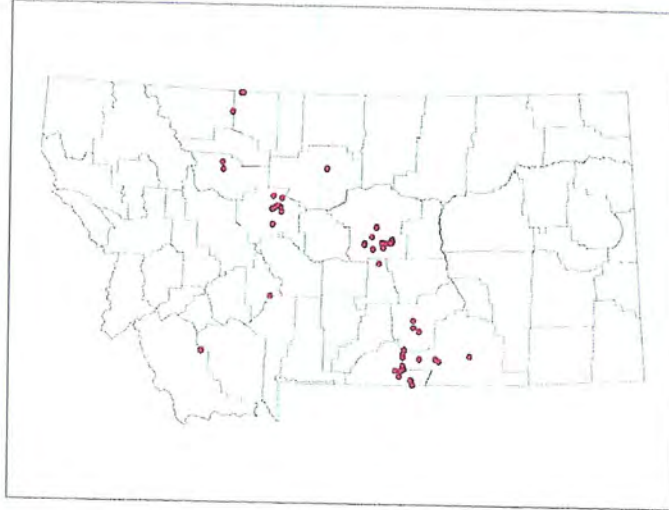
References

File

©2012 John Getty, Montana Tech

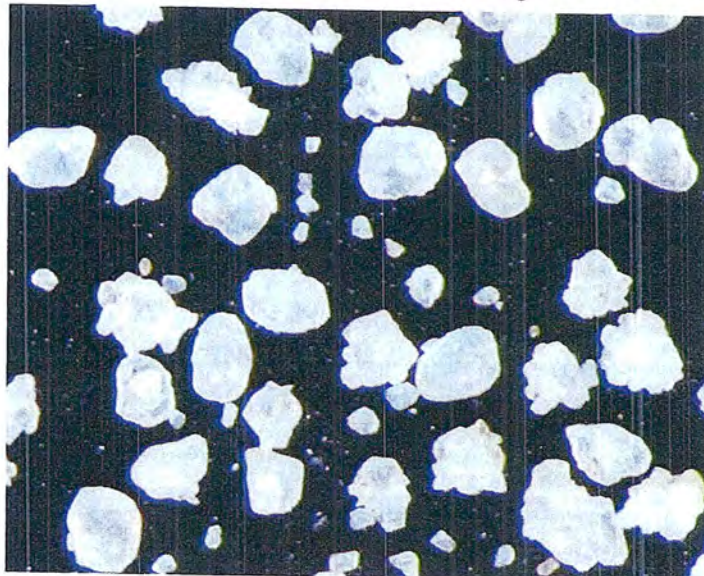


Sample Locations in DB



©2012 John Getty, Montana Tech

Tensleep from the Pryor Mtns



ty, Montana Tech

Requested Budget Revision (No change in annual budget)

Revision Summary 8-Oct-13
SNaP Budget

	Original 3 yr Budget	Requested Revision	Reallocation
Professional Salary	79,688.00	107,107.00	27,419.00
Student Salary	86,400.00	60,200.00	(26,200.00)
Benefits	42,833.00	52,881.00	10,048.00
Contracted Services		6,000.00	6,000.00
Travel	37,560.00	26,560.00	(11,000.00)
Supplies	22,000.00	19,733.00	(2,267.00)
Equipment	38,000.00	34,000.00	(4,000.00)
IDC's	76,620.00	76,620.00	-
TOTAL	383,101.00	383,101.00	

©2012 John Getty, Montana Tech

Contact Information

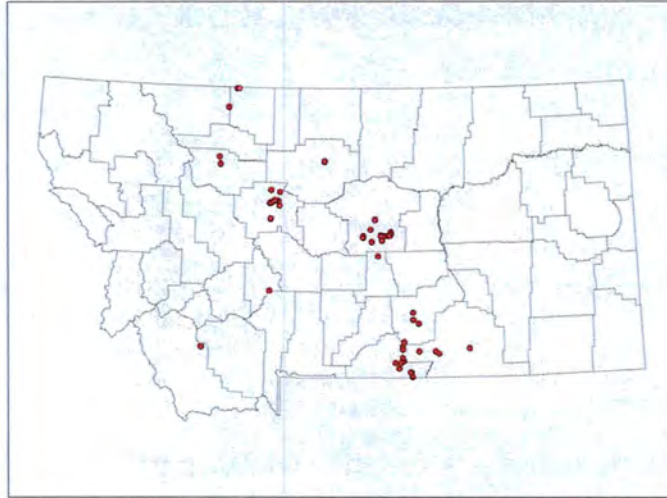
John Getty, Instructor & Lab Director	Montana Tech
Petroleum Engineering	1300 W Park St.
(406) 496-4847, jgetty@mtech.edu	Butte, MT 59701

References

1. U.S. Energy Information Administration, Annual Energy Outlook 2012 Early Release Overview
2. The Oil Drum, accessed 12Feb2012
3. InflationData.com, accessed 12Feb2012
4. Frac Sand in Wisconsin, B. A. Brown, Wisconsin Geological and Natural History Survey, accessed 13Feb2012
5. US Silica web site, locations page, accessed 20Feb2012
6. "Proppants: Where in the World", R Beckwith, JPT, April 2011, p36, accessed 22Feb2012
7. WTRG Economics, US rotary Rig Count Active Rigs, short term.
- 8.
9. Night time image of Williston basin courtesy of the Image Science and Analysis Laboratory, NASA Johnson Space Center
10. US Department of the Interior, "Oil and Gas Lease Utilization – Onshore and Offshore, Report to the President", March 2011
11. Retsch, accessed 17Mar2012
12. North Dakota Industrial Commission, Department of Mineral Resources, Oil and Gas Division
13. Montana Board of Oil and Gas Conservation
14. "Montana Tech Graduate Presentation, Fracture Hydraulics, Geometry & Azimuth", Syfan, F., Presentation delivered at Montana Tech, Butte, MT, 6Mar2012

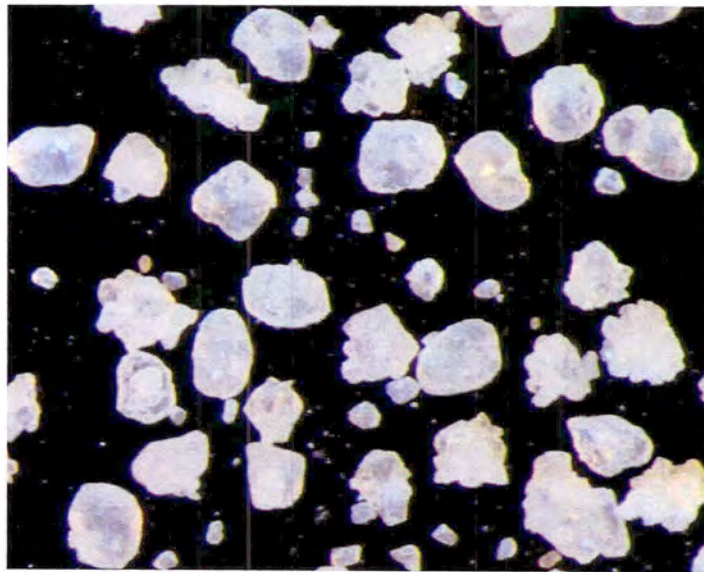
©2012 John Getty, Montana Tech

Sample Locations in DB



©2012 John Getty, Montana Tech

Tensleep from the Pryor Mtns



by, Montana Tech

SNAP Budget - Evaluating Proppant Sources within Montana

New Budget for Contract Extension to 3 Years

Item	Description	Qty	7-Oct-13 Monthly Rate	Part 1			Extension		
				Yr 1	Yr 2	Yr 3	Yr 1	Yr 2	Yr 3
1 Personnel									
1.1	John Getty, Pet Engr, PI (summer salary 0.5mo/Yr 1, 1.5mos/Yr 2, 3wks/Yr 3)	2.75	6,441						
1.2	John Getty, Pet Engr, PI (1 month AY Extra Compensation Yr 1, Yr 2 & Yr 3)	3	6,441	\$3,220	\$9,951	\$5,120			\$18,292
1.3	Katie McDonald, MBMG, Co-PI (0.5 mo/Yr 1, 3wks/Yr 2, 1mo/Yr 3)	1.75	6,116	\$6,441	\$6,634	\$6,827			\$19,902
1.4	Susan Vuke (1 mo/Yr 1, 2 mo/Yr 2, 1 mo/Yr 3)	3.5	4,982	\$3,058	\$4,724	\$6,483			\$14,265
1.5	Jay Gunderson (1 mo/Yr1, 0.5/Yr2, 0.5mo/Yr3)	2	6,116	\$4,982	\$10,262	\$2,640			\$17,884
1.6	Luke Buckley, GIS programming (1 mo/Yr 1, 1 mo/Yr 2, 2 mo/Yr 3)	5	4,683	\$6,116	\$3,150	\$3,241			\$12,507
1.7	4 Students (10 hrs/wk @ \$10/hr during AY, 20 hrs/wk@ \$10/hr Summer)			\$4,683	\$9,647	\$9,928			\$24,258
1.8	Benefits (46% Professionals)			\$13,760	\$25,800	\$20,640			\$60,200
1.9	Benefits (students 3 % AY & 10% Summer)			13,110	\$20,409	\$15,750			\$49,269
TOTAL SALARY & BENEFITS				\$1,135	\$1,496	\$980			\$3,612
				\$56,504	\$92,073	\$71,610			\$220,188

2 Travel									
2.1	Field work, per diem (3 ppl, 100 days)	300	\$23	\$2,000	\$4,400	\$500			\$6,900
2.2	Field work, lodging (3 rooms, 40 nights)	120	\$77	\$1,500	\$5,900	\$1,860			\$9,240
2.3	Field work, mileage (200 miles/day)	15000	\$0.36	\$1,500	\$3,300	\$600			\$5,400
2.4	Presentations/Conferences (2 ppl)	2	\$2,500		\$1,500	\$3,500			\$5,000
TOTAL TRAVEL				\$5,000	\$15,100	\$6,460			\$26,560

3 Supplies									
3.1	Chisle Hammer and generator	2	\$1,500		\$3,000				\$3,000
3.2	Drying Oven	1	\$700	\$700					\$700
3.3	Crush cell	1	\$500	\$500					\$500
3.4	Lab Supplies (per year)	3	var	\$1,962	\$2,255	\$2,143			\$6,359
3.5	Sieve set	1	\$500	\$500					\$500
3.6	Gram scales	1	\$600	\$600					\$600
3.7	GPS units for field notes and photo-documentation	3	\$600	\$1,800					\$1,800
3.8	Communication and copying charges	3	\$450	\$450	\$500	\$550			\$1,500
3.9	Sieve Shaker	1	\$2,000	\$2,000					\$2,000
3.10	Computer	1	\$1,900	\$1,900					\$1,900
3.11	Equipment Maintenance				\$874				\$874
TOTAL SUPPLIES				\$10,412	\$6,629	\$2,693			\$19,733

4 Equipment									
4.1	Load frame	1	\$19,700	\$19,700					\$19,700
4.2	Petrographic Microscope	1	\$7,300		\$7,300				\$7,300
4.3	Storage Unit -	1	\$7,000	\$7,000					\$7,000
TOTAL EQUIPMENT				\$26,700	\$7,300	\$0			\$34,000

5 Contracted Services									
5.1	Consultant (David Lopez, \$600/day)	10	600	\$2,400	\$3,600	\$0			\$6,000
TOTAL CONTRACTED SERVICES				\$2,400	\$3,600	\$0			\$6,000

Project Expenses			
Indirect Costs (State rate 25%)	Project Cost		
101,016	124,702	80,763	306,481
25,254	31,175	20,191	76,620
\$ 126,270	\$ 155,877	\$ 100,954	\$ 383,101
Yr1	Yr2	Yr3	Project Total
Part 1	Extended		

Revision Summary
SNaP Budget

8-Oct-13

	Original 3 yr Budget	Requested Revision	Reallocation
Professional Salary	79,688.00	107,107.00	27,419.00
Student Salary	86,400.00	60,200.00	(26,200.00)
Benefits	42,833.00	52,881.00	10,048.00
Contracted Services		6,000.00	6,000.00
Travel	37,560.00	26,560.00	(11,000.00)
Supplies	22,000.00	19,733.00	(2,267.00)
Equipment	38,000.00	34,000.00	(4,000.00)
IDC's	76,620.00	76,620.00	-
TOTAL	383,101.00	383,101.00	

8

SNaP Budget - Evaluating Proppant Sources within Montana

New Budget for Contract Extension to 3 Years

7-Oct-13

Item	Description	Qty	Monthly Rate	Part 1	Extension			Project Total
				Yr 1	Yr 2	Yr 3		
1 Personnel								
1.1	John Getty, Pet Engr, PI (summer salary 0.5mo/Yr 1, 1.5mos/Yr 2, 3wks/Yr 3)	2.75	6,441	\$3,220	\$9,951	\$5,120	\$18,292	
1.2	John Getty, Pet Engr, PI (1 month AY Extra Compensation Yr 1, Yr 2 & Yr 3)	3	6,441	\$6,441	\$6,634	\$6,827	\$19,902	
1.3	Katie McDonald, MBMG, Co-PI (0.5 mo/Yr 1, 3wks/Yr 2, 1mo/Yr 3)	1.75	6,116	\$3,058	\$4,724	\$6,483	\$14,265	
1.4	Susan Vuke (1 mo/Yr 1, 2 mo/Yr 2, 1 mo/Yr 3)	3.5	4,982	\$4,982	\$10,262	\$2,640	\$17,884	
1.5	Jay Gunderson (1 mo/Yr1, 0.5/Yr2, 0.5mo/Yr3)	2	6,116	\$6,116	\$3,150	\$3,241	\$12,507	
1.6	Luke Buckley, GIS programming (1 mo/Yr 1, 1 mo/Yr 2, 2 mo/Yr 3)	5	4,683	\$4,683	\$9,647	\$9,928	\$24,258	
1.7	4 Students (10 hrs/wk @ \$10/hr during AY, 20 hrs/wk@\$10/hr Summer)			\$13,760	\$25,800	\$20,640	\$60,200	
1.8	Benefits (46% Professionals)			13,110	\$20,409	\$15,750	\$49,269	
1.9	Benefits (students 3 % AY & 10% Summer)			\$1,135	\$1,496	\$980	\$3,612	
TOTAL SALARY & BENEFITS				\$56,504	\$92,073	\$71,610	\$220,188	

2 Travel							
2.1	Field work, per diem (3 ppl, 100 days)	300	\$23	\$2,000	\$4,400	\$500	\$6,900
2.2	Field work, lodging (3 rooms, 40 nights)	120	\$77	\$1,500	\$5,900	\$1,860	\$9,240
2.3	Field work, mileage (200 miles/day)	15000	\$0.36	\$1,500	\$3,300	\$600	\$5,400
2.4	Presentations/Conferences (2 ppl)	2	\$2,500		\$1,500	\$3,500	\$5,000
TOTAL TRAVEL				\$5,000	\$15,100	\$6,460	\$26,560

3 Supplies							
3.1	Chisle Hammer and generator	2	\$1,500		\$3,000		\$3,000
3.2	Drying Oven	1	\$700	\$700			\$700
3.3	Crush cell	1	\$500	\$500			\$500
3.4	Lab Supplies (per year)	3	var	\$1,962	\$2,255	\$2,143	\$6,359
3.5	Sieve set	1	\$500	\$500			\$500
3.6	Gram scales	1	\$600	\$600			\$600
3.7	GPS units for field notes and photo-documentation	3	\$600	\$1,800			\$1,800
3.8	Communication and copying charges	3	\$450	\$450	\$500	\$550	\$1,500
3.9	Sieve Shaker	1	\$2,000	\$2,000			\$2,000
3.10	Computer	1	\$1,900	\$1,900			\$1,900
3.11	Equipment Maintenance				\$874		\$874
TOTAL SUPPLIES				\$10,412	\$6,629	\$2,693	\$19,733

4 Equipment							
4.1	Load frame	1	\$19,700	\$19,700			\$19,700
4.2	Petrographic Microscope	1	\$7,300		\$7,300		\$7,300
4.3	Storage Unit	1	\$7,000	\$7,000			\$7,000
TOTAL EQUIPMENT				\$26,700	\$7,300	\$0	\$34,000

5 Contracted Services							
5.1	Consultant (David Lopez, \$600/day)	10	600	\$2,400	\$3,600	\$0	\$6,000
TOTAL CONTRACTED SERVICES				\$2,400	\$3,600	\$0	\$6,000

Project Expenses	101,016	124,702	80,763	306,481
Indirect Costs (State rate 25%)	25,254	31,175	20,191	76,620
Project Cost	\$ 126,270	\$ 155,877	\$ 100,954	\$ 383,101
Yr1	Yr2	Yr3	Project Total	
Part 1	Extended			